

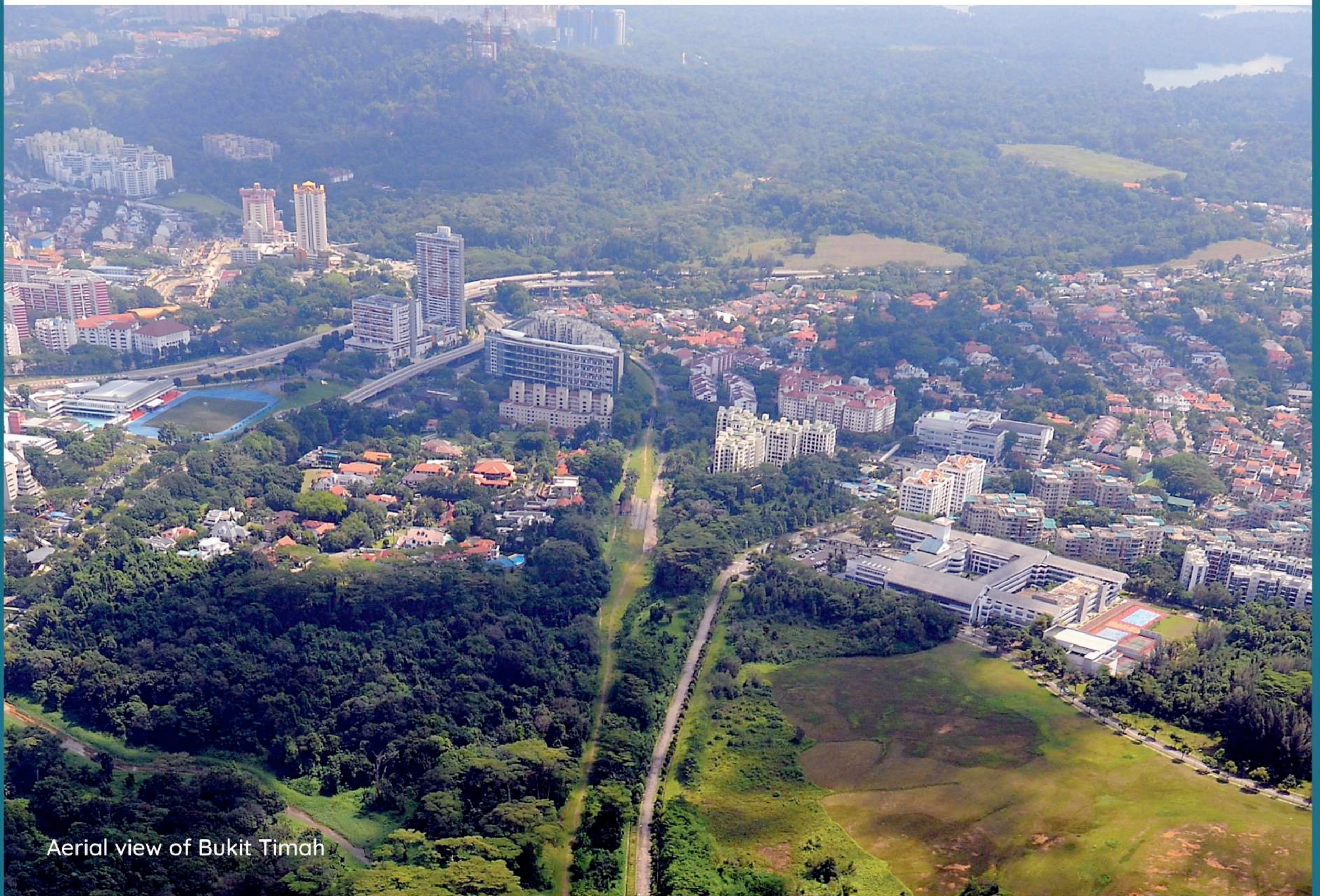
DRAFT MASTER PLAN 2019

WHAT TO LOOK OUT FOR IN BUKIT TIMAH!

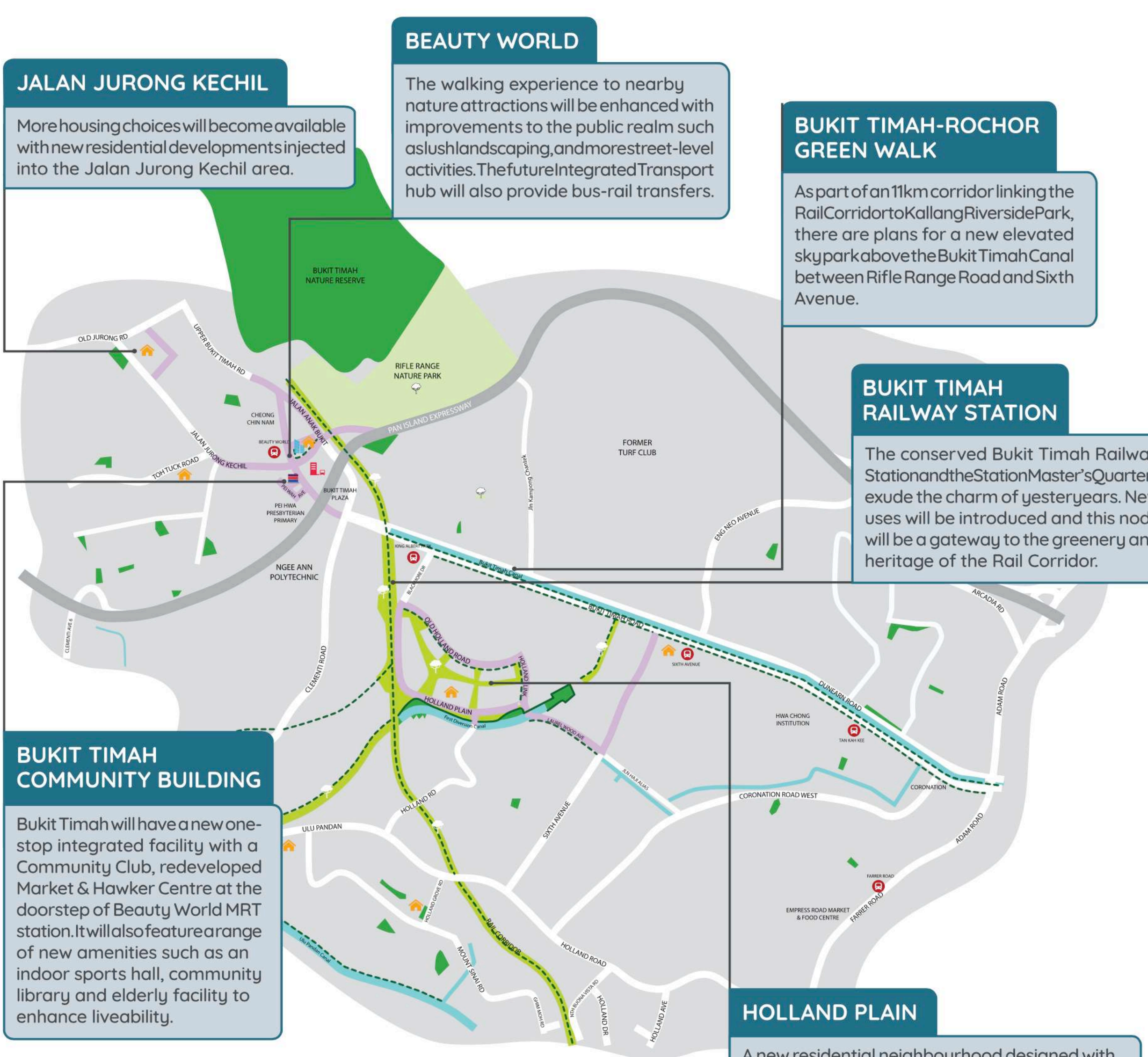
Surrounded by greenery and heritage, Bukit Timah is an established housing area that remains a popular choice for residential living with a good mix of housing options. The Downtown Line (DTL) provides easy access to the area and its unique heritage, lifestyle and recreational offerings. Residents can look forward to more commercial and community amenities at Beauty World as well as better access to the expansive network of greenery nearby. For more information on the Draft Master Plan 2019, please visit ura.sg/DMP19.

HOW OUR TOWNS ARE PLANNED

Our towns are planned to be liveable and self-sufficient, with easily accessible shops, health care, schools, community facilities and parks. Commercial nodes, industrial estates and business parks within or nearby the town, also help to provide nearer job opportunities for residents. The detailed planning and implementation of plans for each town is a joint effort of many government agencies.



Aerial view of Bukit Timah



JALAN JURONG KECHIL

More housing choices will become available with new residential developments injected into the Jalan Jurong Kechil area.

BEAUTY WORLD

The walking experience to nearby nature attractions will be enhanced with improvements to the public realm such as lush landscaping, and more street-level activities. The future Integrated Transport hub will also provide bus-rail transfers.

BUKIT TIMAH-ROCHOR GREEN WALK

As part of an 11km corridor linking the Rail Corridor to Kallang Riverside Park, there are plans for a new elevated skypark above the Bukit Timah Canal between Rifle Range Road and Sixth Avenue.

BUKIT TIMAH RAILWAY STATION

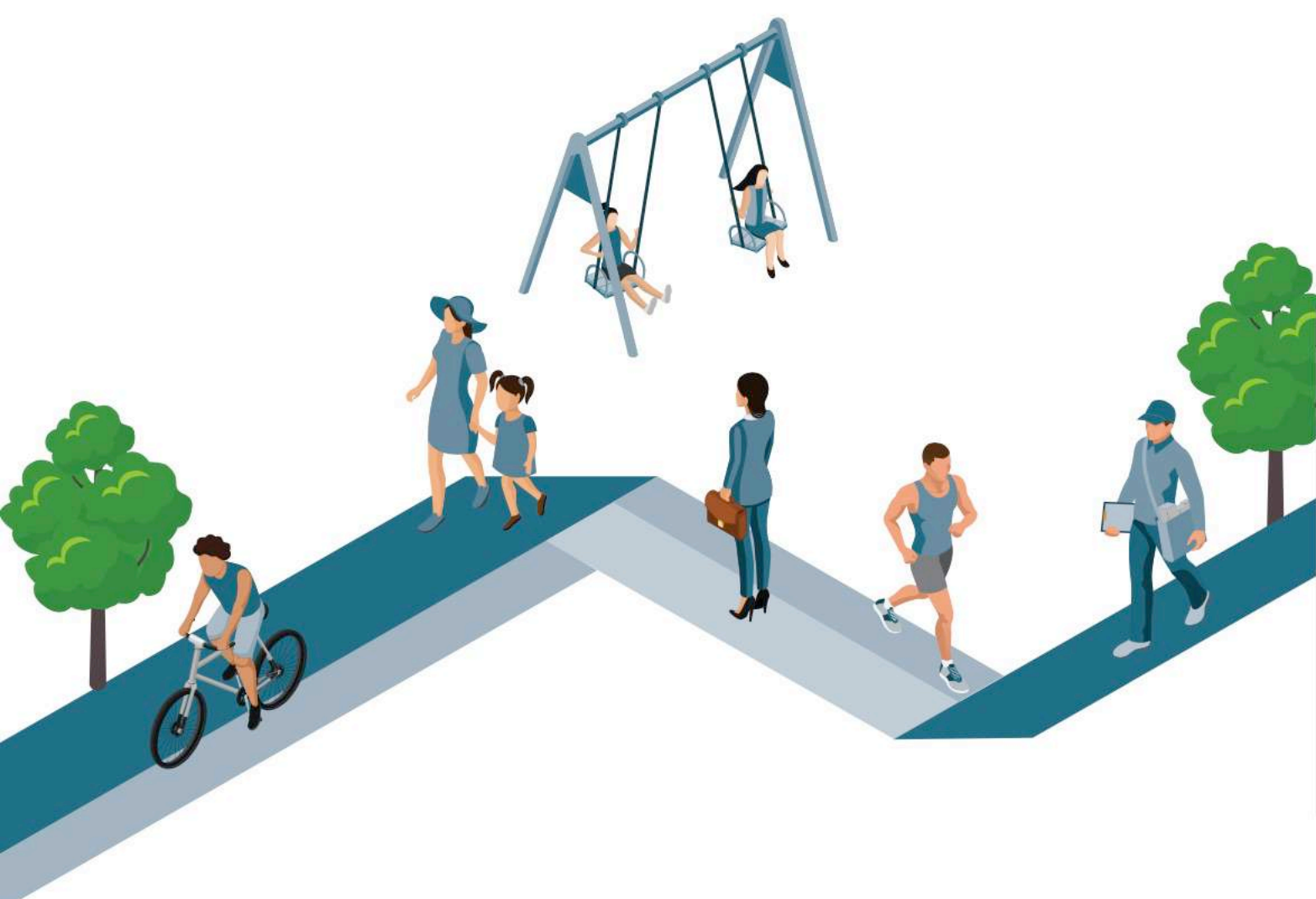
The conserved Bukit Timah Railway Station and the Station Master's Quarters exude the charm of yesteryears. New uses will be introduced and this node will be a gateway to the greenery and heritage of the Rail Corridor.

BUKIT TIMAH COMMUNITY BUILDING

Bukit Timah will have a new one-stop integrated facility with a Community Club, redeveloped Market & Hawker Centre at the doorstep of Beauty World MRT station. It will also feature a range of new amenities such as an indoor sports hall, community library and elderly facility to enhance liveability.

HOLLAND PLAIN

A new residential neighbourhood designed with sustainable water management features, a wetland park and large community plain will create an inviting and lush environment for surrounding residents and the new community to enjoy.



LEGEND

EXISTING DEVELOPMENTS		NEW DEVELOPMENTS	
	Park		Residential
	Interim Park		Commercial
	MRT		MRT
	Bus Interchange		Integrated Transport Hub
	Integrated Transport Hub		Road Improvement (Upcoming/Under Study)
	Waterbody		Park Connector/Cycling Route
	Park Connector/Cycling Route		Park
			Interim Park